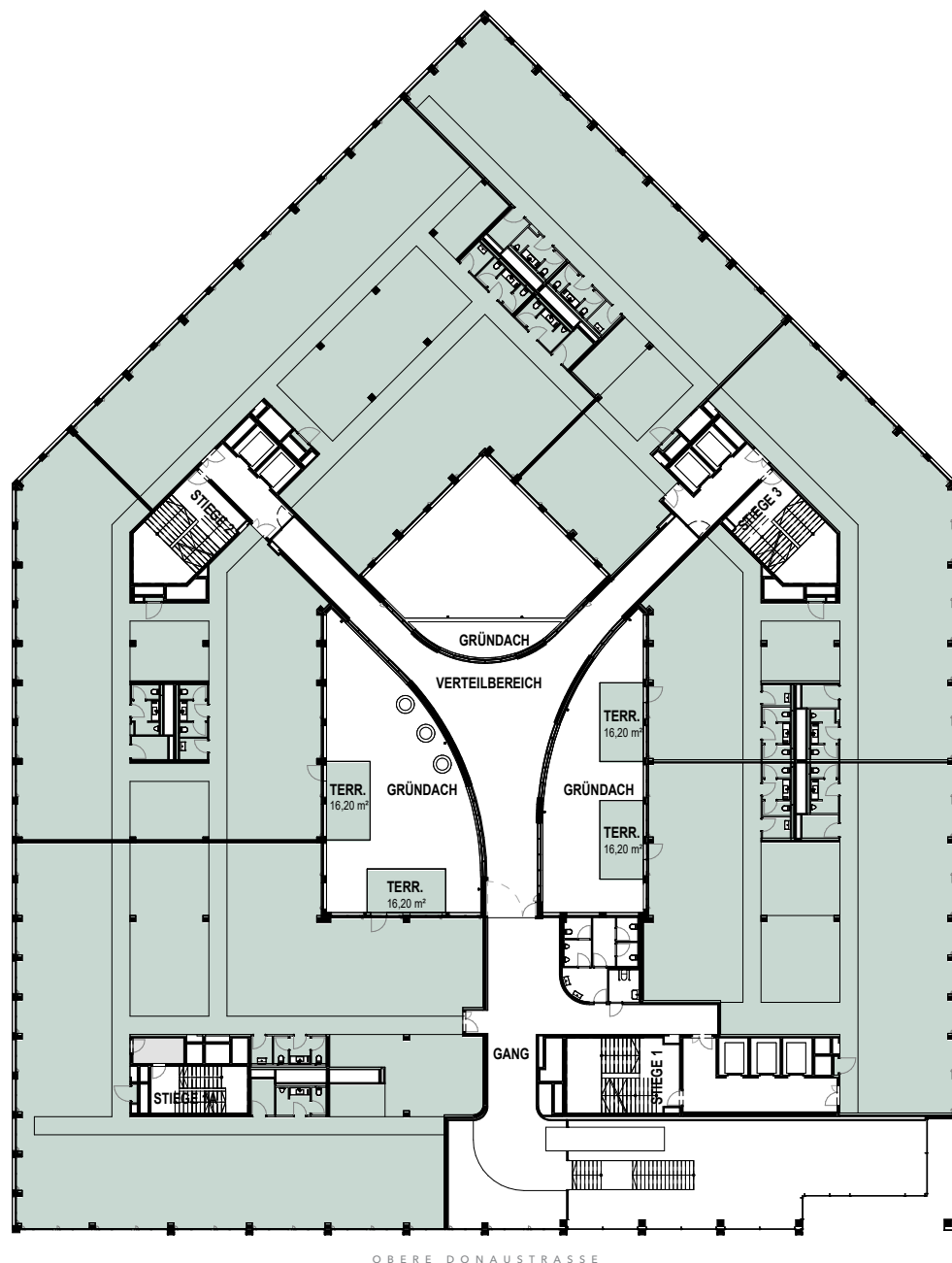


Leopold Quartier

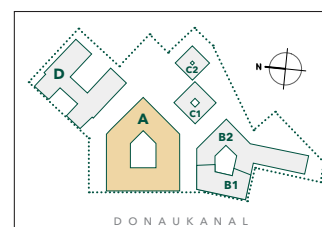
OFFICE

1. OBERGESCHOSS

Mietflächen gesamt 1. OG:
ca. 2.891m²



LAGEPLAN



LeopoldQuartier

Obere Donaustraße 25
1020 Wien
www.leopoldquartier.at

2022-10-10

HNP
architects

ubm
entwicklung