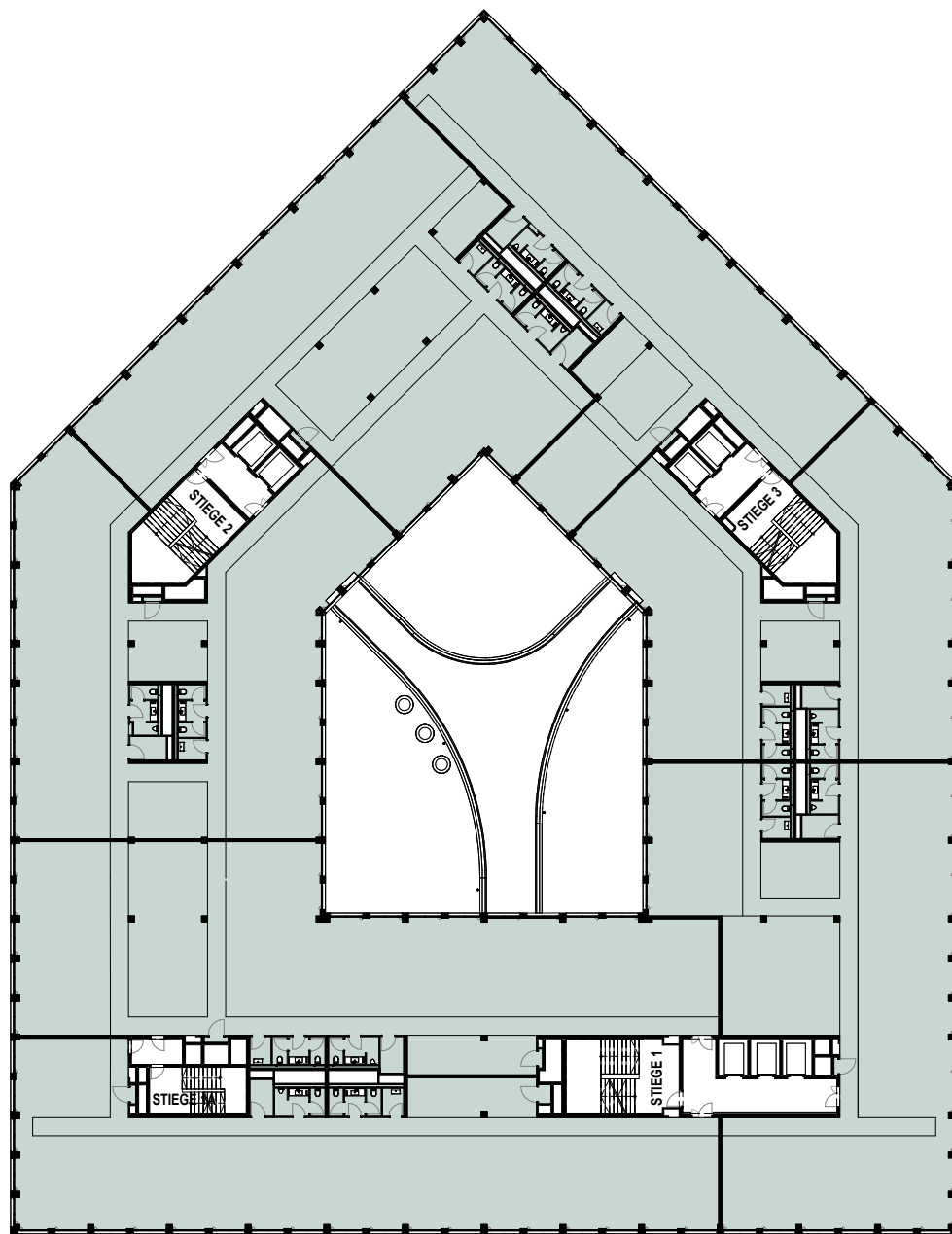


Leopold Quartier

OFFICE

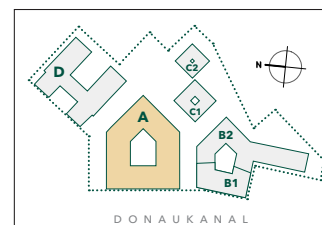
2. OBERGESCHOSS

Mietflächen gesamt 2. OG:
ca. 3.324 m²



OBERE DONAUSTRASSE

LAGEPLAN



LeopoldQuartier

Obere Donaustraße 25
1020 Wien
www.leopoldquartier.at

2022-10-10

HNP
architects

ubm
entwicklung