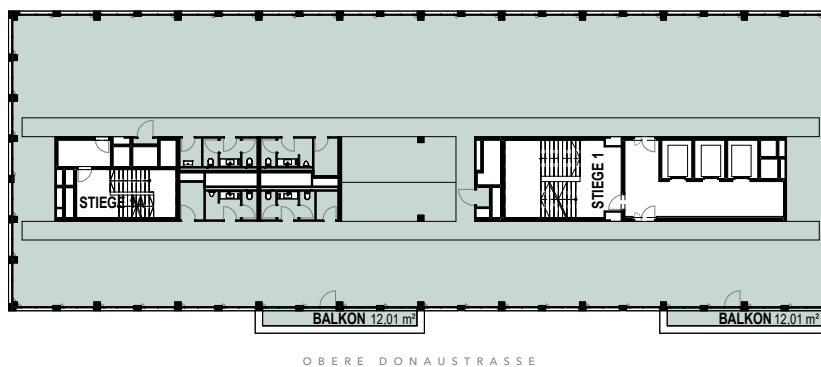


Leopold Quartier

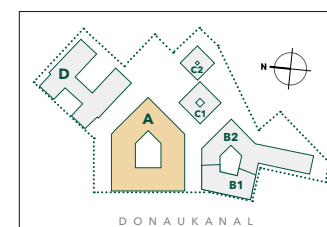
OFFICE

8. OBERGESCHOSS

Mietfläche gesamt 8. OG:
ca. 879 m²



LAGEPLAN



LeopoldQuartier

Obere Donaustraße 25
1020 Wien
www.leopoldquartier.at

2022-10-10

HNP
architects

ubm
entwicklung