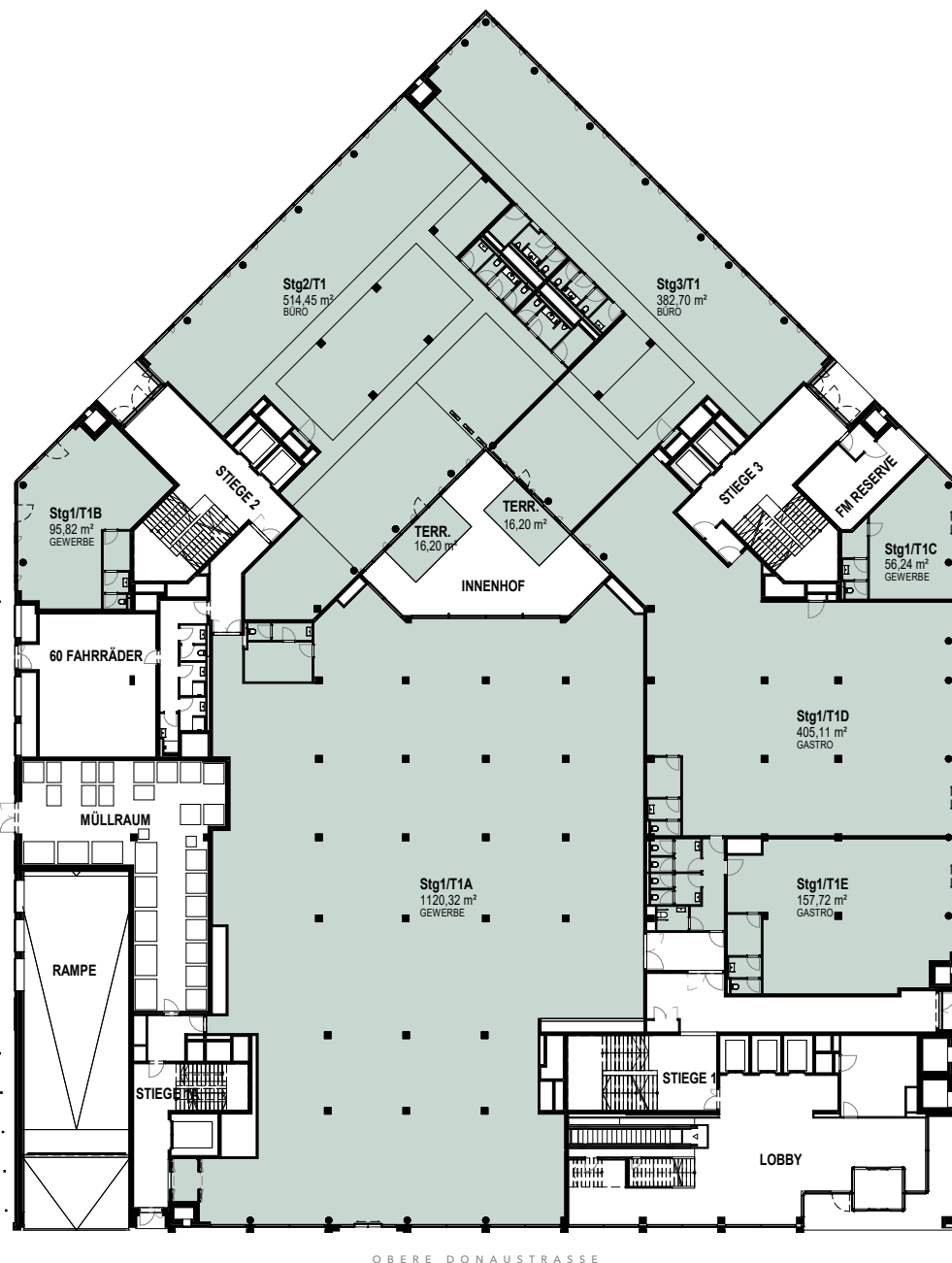


# Leopold Quartier

OFFICE

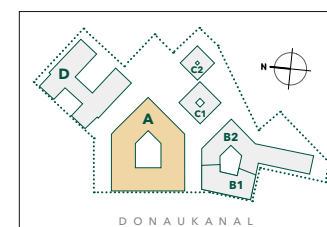
## ERDGESCHOSS

Mietflächen gesamt EG:  
ca. 2.761m<sup>2</sup>



OBERE DONAUSTRASSE

## LAGEPLAN



## LeopoldQuartier

Obere Donaustraße 25  
1020 Wien  
[www.leopoldquartier.at](http://www.leopoldquartier.at)

2022-10-10

**HNP**  
architects

**ubm**  
entwicklung